



### 7.1.2: The Institution has facilities and initiatives for

1. Alternate sources of energy and energy conservation measures
2. Management of the curious types of degradable and non degradable waste
3. Water conservation
4. Green campus initiatives
5. **Disabled-friendly, barrier free environment**

### INDEX

#### 5. Disabled-Friendly, Barrier Free Environment:

S. No	Particulars	Page No.
1	Ramps for Physically Disabled	2
2	Divyangjan Friendly washrooms	4
3	Assistive technology and facilities for persons with Divyangjan accessible website, screen-reading software, mechanized equipment, etc.	5
4	Provision for enquiry and information: Human assistance, reader, scribe, soft copies of reading materials, screen reading, etc.	7
5	Divyangjan Policy Document	11





## **Importance and Information regarding disabled-friendly, barrier free environment:**

We are all physically disabled at some time in our lives. A child, a person with a broken leg, a parent with a pram, an elderly person, etc. are all disabled in one way or another. Those who remain healthy and able-bodied all their lives are few. As far as the built-up environment is concerned, it is important that it should be barrier-free and adapted to fulfill the needs of all people equally.

It is also intrinsically important to design the classrooms, library, washrooms, canteen, and parking facilities etc. to make the movement easy. It is equally important to use the technology to make learning is in accessible formats to meet the diverse needs of students with disabilities studying in the universities/affiliated colleges. This document explores the scientific tested and appropriate usable technologies available today to develop both built and learning environments is disability friendly.

### **The target group is composed of 5 major categories:**

1. Wheelchair users
2. People with limited walking abilities
3. The sightless and the partially sighted
4. People with difficulties in learning
5. Those persons who are temporarily disabled due to accidents or illness,

The needs of persons with disabilities are not homogenous. Most of the accessible designs compiled are to provide a barrier-free environment for the independence, convenience and safety of all persons including people with disabilities

Avanthi Institute of Pharmaceutical Sciences is committed in its programs to bring social change in the society. As per the AICTE Policy for Divyangjans, the institute provides all the facilities required for a barrier free environment to the divyangjans of all categories. Divyangjans are provided with ramps, wheel chairs to go to classrooms, and facilitate them to write exams in the ground floor during examinations. The following are the evidences regarding the initiatives taken for the Divyangians.

---

*Committed to Excellence in Technical Education*



PRINCIPAL  
Avanthi's Institute of Pharmaceutical Sciences  
Gunthapally (V), Hayath Nagar (M),  
Ranga Reddy Dist.



# AVANTHI INSTITUTE OF PHARMACEUTICAL SCIENCES

(Approved by PCI, AICTE & Affiliated to JNTUH)

Gunthapally (V), Abdullapurmet (M), R.R. Dist., Near Ramoji Filmcity, Hyderabad - 501 512.



## 1.Ramps for Physically Disabled:



## Ramps for Disabled Friendly Environment



Wheel chair in campus to provide disabled friendly environment

*Committed to Excellence in Technical Education*



PRINCIPAL  
Avanthi's Institute of Pharmaceutical Sciences  
Gunthapally (V), Hayath Nagar (M),  
Ranga Reddy Dist.



## 2. Divyangian-Friendly washrooms:

In view of Divyangians, Avanthi Institute of Pharmaceutical Sciences has constructed Divyang-friendly washroom for both Ladies and Gents. Western commodes are provided with both sides supportive pipes. Flushes are also installed for their comfort.



Committed to Excellence in Technical Education



PRINCIPAL

Avanthi's Institute of Pharmaceutical Sciences  
Gunthapally (V), Hayath Nagar (M),  
Ranga Reddy Dist.



**DIFFERENTLY ABLED FRIENDLY RESTROOM**

### 3. Assistive technology and facilities for persons with Divyangjan accessible

website, screen-reading software, mechanized equipment, etc

Avanathi Institute of Pharmaceutical Sciences has a common platform of providing several facilities from the entrance of reception office to afford the various enquiries regarding admission process, fee payment, and examination fee payment and moreover the office assistants take care of Divyangjan needs for their welfare.

#### Details of the Software procured for providing the assistance:

##### NVDA (NONVISUAL DESKTOP ACCESS):

Non Visual Desktop Access (NVDA) is a free and open- source, portable screen reader for Microsoft Windows. The project was started by Michael Curran in 2006. NVDA is programmed in python. It currently works exclusively with accessibility APIs such as UI Automation, Microsoft Active Accessibility, IAccessible2 and the Java Access

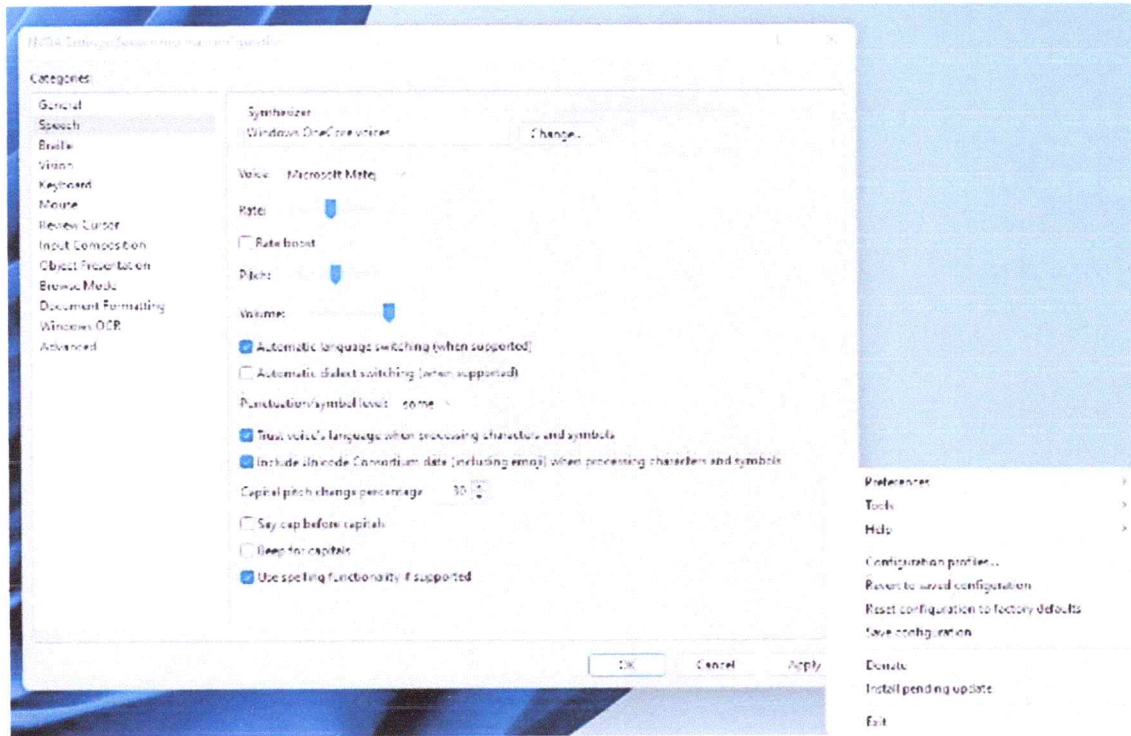
*Committed to Excellence in Technical Education*



PRINCIPAL  
Avanathi's Institute of Pharmaceutical Sciences  
Gunthapally (V), Hayath Nagar (M),  
Ranga Reddy Dist.



Bridge, rather than using specialized video drivers to “intercept” and interpret visual information. It is licensed under the GNU General Public Licence version 2.



### Features and accessibility API support:

NVDA uses eSpeak as its integrated speech synthesizer. It also supports the Microsoft Speech platform synthesizer, ETI Eloquence and also supports SAPI synthesizers. Output to Braille displays is supported officially from Version 0.6p3 onward. Besides general Windows functionality, NVDA works with software such as Microsoft office applications, WordPad, Notepad and Windows Media Player, web browsers such as Mozilla Firefox, Google Chrome, Internet Explorer, and Microsoft Edge. It supports most email clients such as Outlook, Mozilla Thunderbird, and Outlook Express. NVDA also works with most functions of Microsoft Word, Microsoft PowerPoint and Microsoft Excel. The free office suites Libre Office and OpenOffice.org are supported by way of the Java Access Bridge package. Since early 2009, NVDA supports the WAIARIA standard for Accessible Rich Internet Applications, to facilitate better accessibility of web applications for blind users. In 2021 the screen reader user survey by Web AIM found NVDA to be the second-most popular screen reader worldwide, having previously assumed the number one position in their 2019 survey; 30.7% of survey participants used it as a primary screen reader, while 58.8% of participants used it often. Screen readers can be used to test the accessibility of software and websites. NVDA is the primary screen reader of choice by accessibility practitioners.

*Committed to Excellence in Technical Education*

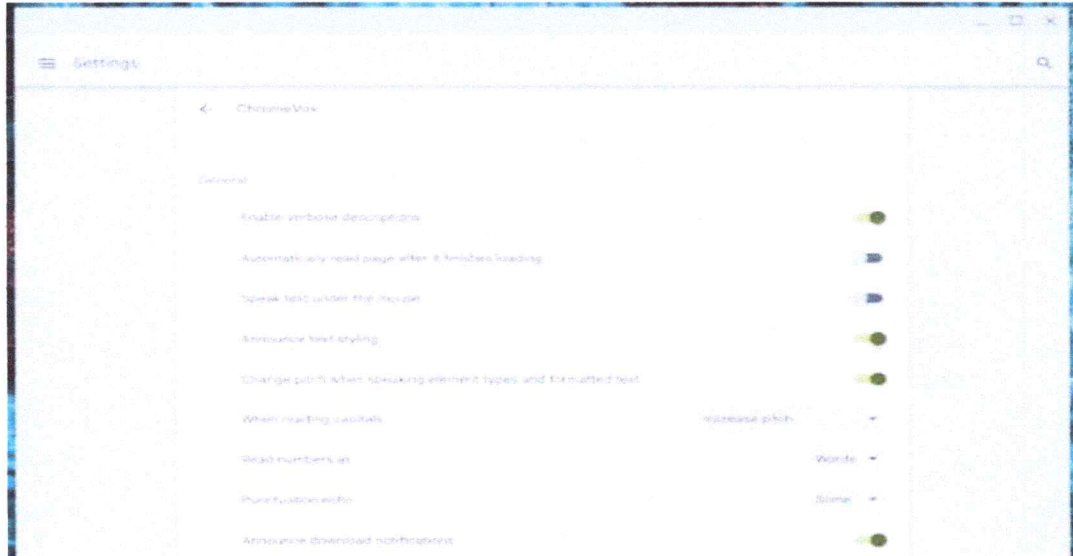


PRINCIPAL  
Avanthi's Institute of Pharmaceutical Sciences  
Gunthapally (V), Hayath Nagar (M),  
Ranga Reddy Dist.



## CHROMEVOX

ChromeVox is a screen reader created by Google that allows users to browse the Internet. ChromeVox is built into any computer running Chrome OS including every Chrome book. It can also be added to both Windows and Mac OS and used with Google Chrome.



### 4. Provisions for enquiry and information, Human assistance reader, Scribe, softcopies and reading materials screen reading

The institute is having its policy for differently abled persons in line with AICTE.

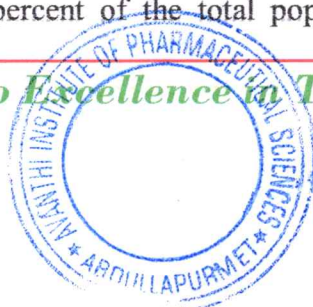
1. Provide guidance and counseling to differently-abled individuals
2. Creating awareness about the needs of differently-abled person's issues concerning to general and Learning.
3. To assist them, to gain successful employment opportunities
4. Facilitate admission in various courses as per the norms of the affiliating university

1. The Constitution of India ensures equality, freedom, justice and dignity of all individuals and implicitly mandates an inclusive society for all including persons with disabilities. In recent years, there have been vast and positive changes in the perception of the society towards persons with disabilities. It has been realized that a majority of persons with disabilities can lead a better quality of life if they have equal opportunities and effective access to rehabilitation

measures.

2. According to the Census 2001, there are 2.19 crore persons with disabilities in India who constitute 2.13 percent of the total population. This includes persons with

*Committed to Excellence in Technical Education*



PRINCIPAL  
Avanthi's Institute of Pharmaceutical Sciences  
Gunthapally (V), Hayath Nagar (M),  
Ranga Reddy Dist.



visual, hearing, speech, loco motor and mental disabilities. Seventy-five percent of persons with disabilities live in rural areas, 49 percent of disabled population is literate and only 34 percent are employed. The earlier emphasis on medical rehabilitation has now been replaced by an emphasis on social rehabilitation. There has been an increasing recognition of abilities of persons with disabilities and emphasis on mainstreaming them in the society based on their capabilities. The Government of India has enacted three legislations for persons with disabilities viz.

- i. Persons with Disability (Equal Opportunities, Protection of Rights and Full Participation) Act, 1995, which provides for education, employment, creation of barrier-free environment, social security, etc.
  - ii. National Trust for Welfare of Persons with Autism, Cerebral Palsy, Mental Retardation and Multiple Disability Act, 1999, has provisions for legal guardianship of the four categories and creation of enabling environment for as much independent living as possible.
  - iii. Rehabilitation council of india Act, 1992, deals with the development of manpower for providing rehabilitation services.
3. In addition to the legal framework, extensive infrastructure has been developed.

## **Human Assistance Reader. Scribe**

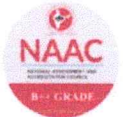
1. Avanthi Institute of Engineering and Technology provides the facility of scribes to assist differently able and visually impaired students during examination. As per the Government Circular ED 5 UNE 2004, dated 5.3.2004 and ED 5 UNE 2004, dated 22.3.2004, the following guidelines are to be strictly followed:

The blind student may select the scribe

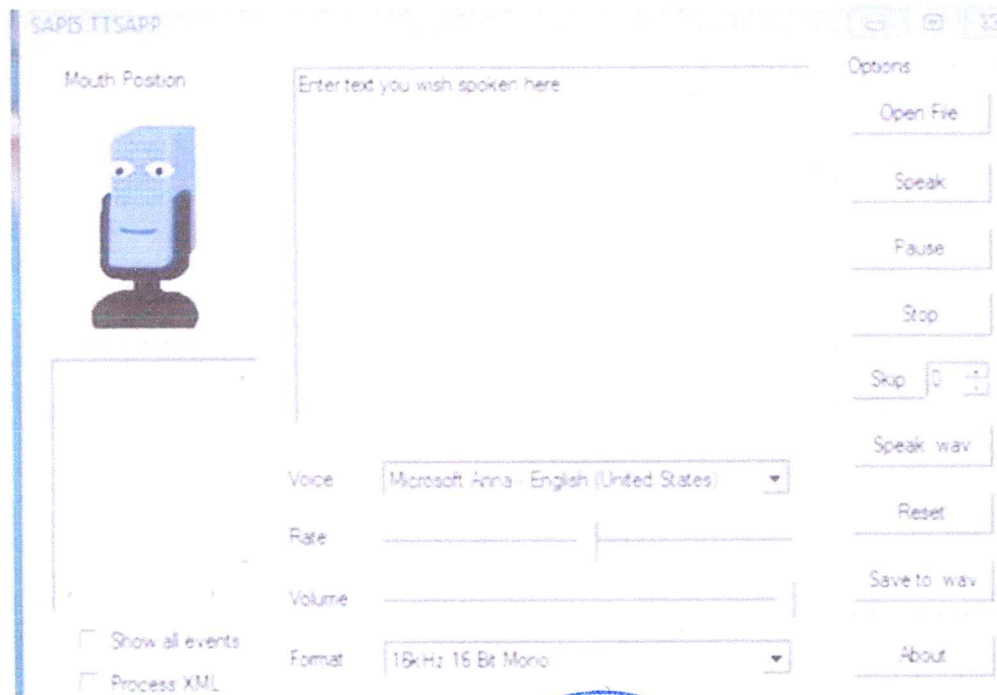
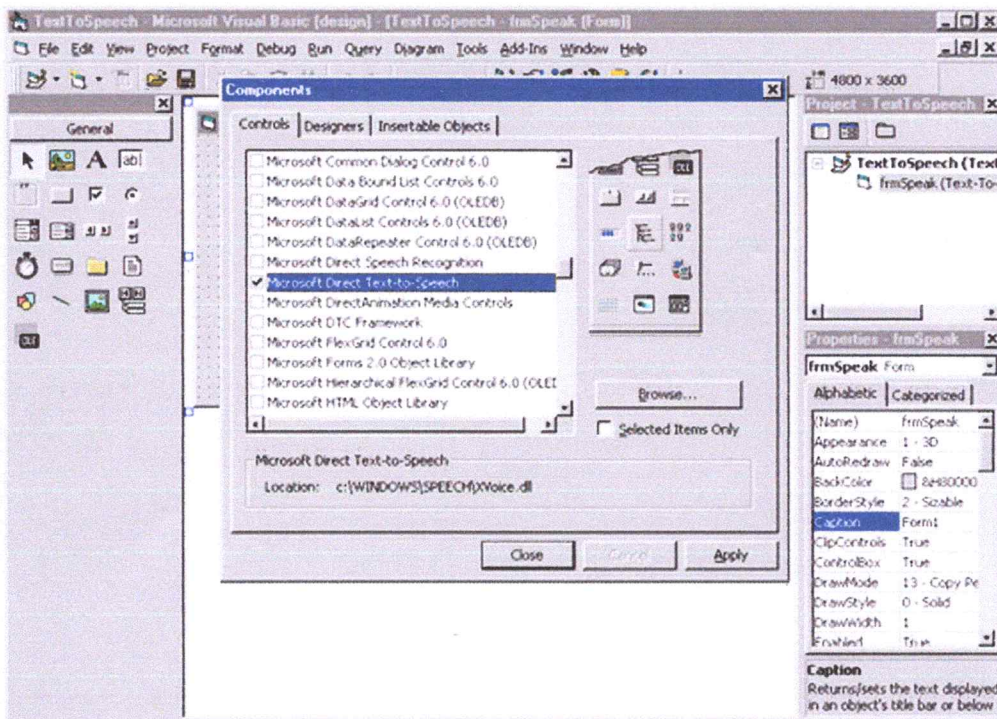
- a) The scribe need not have same qualification of a student pertaining to the examination.
  - b) A physically disabled / blind / hearing impaired candidate and the scribes for such a candidate shall be allowed an extra time of 20 minutes per hour.
  - c) As the hearing-impaired students are having language problems, possibilities of grammar mistakes, mistakes in building the sentences are there. Hence, the answer papers shall be identified separately and evaluated with additional care.
2. Institute has the provision to provide Software facility for Visually Impaired students and the







students who suffer from low vision issues or partial blindness etc. The software can easily convert speech to text and text to speech. The visually impaired students can speak to convert voice into text. The students would be provided with an assistant to read the text and convert as audio source for their future reference. The text material can also be converted to speech or voice and the recordings can be used by the student to attain the concepts clearly.



Committed to Excellence in Technical Education



PRINCIPAL  
Avanathi Institute of Pharmaceutical Sciences  
Gunthapally (V), Hayath Nagar (M),  
Ranga Reddy Dist.



**DIVYANGJAN POLICY**

Dt: 19-06-2017

**Objectives of the Policy:**

1. To create inclusive culture to avoid discrimination, exploitation and exclusion of Disabled Students and staff from all spheres of work and education.
2. To create a suitable regulatory mechanism for effective delivery of services to Disabled Students and Staff of the Institution,
3. To ensure implementation of all legislations with respect to persons with disabilities

**Admission Policy for persons with disabilities:**

1. Teal reserved seats for persons with disabilities in all the programs are filled according to the guidelines given by AICTE/University.
2. All the facilities, which are suggested by AICTE University will be provided to the people with disabilities

**Exam Policy:**

1. The Institute shall make suitable arrangements for Divyangjan Students to participate in the Examinations
2. The examination will follow the guidelines issued by JNTUH, Hyderabad, in giving extra time or allotting Scribes

**Facilities and Initiatives Undertaken:**

The Institute has Infrastructure facilities, the army Wheel Chair, Blind stick, Scribes for the examinations and Disabled friendly washrooms. There is an inbuilt software system in MS office Le Road la Tot and Test to Real for some Disabled persons and special training is given to the studentss who need . Currently there are no Disabled students in the campus. If admitted in the future, then we will provide the other facilities required.

Divyangjan policy is adapted on this day. 19th June 2017 at Avanthi Institute of Pharmaceutical Sciences, Gunthapally, Hyderabad.